

OPEN

Pediatric Profound Dengue Shock Syndrome and Use of Point-of-Care Ultrasound During Mechanical Ventilation to Guide Treatment: Single-Center Retrospective Study, 2013–2021

OBJECTIVES: Profound dengue shock syndrome (DSS) complicated by severe respiratory failure necessitating mechanical ventilation (MV) accounts for high case fatality rates among PICU-admitted patients. A major challenge to management is the assessment of intravascular volume, which can be hampered by severe plasma leakage and the use of MV.

DESIGN: Retrospective cohort, from 2013 to 2021.

PATIENTS: Sixty-seven children with profound DSS supported by MV, some of whom underwent bedside point-of-care ultrasound (POCUS) for assessment and monitoring of hemodynamics and fluid administration.

SETTING: PICU of the tertiary Children's Hospital No. 2 in Vietnam.

INTERVENTIONS: None.

MEASUREMENTS AND MAIN RESULTS: We analyzed data clinical and laboratory data during PICU stay. In particular, during use of MV (i.e., at times 0-, 6-, and 24-hr after commencement) and fluid resuscitation. The primary study outcome was 28-day in-hospital mortality, and the secondary outcomes were associations with changes in hemodynamics, blood lactate, and vasoactive-inotrope score (VIS). Patients had a median age of 7 years (interquartile range, 4–9). Use of POCUS during fluid management (39/67), as opposed to not using (28/67), was associated with lower mortality (6/39 [15%] vs. 18/28 [64%]; difference 49% [95% CI, 28–70%], $p < 0.001$). Use of POCUS was associated with lower odds of death (adjusted odds ratio 0.17 [95% CI, 0.04–0.76], $p = 0.02$). The utilization of POCUS, versus not, was associated with greater use of resuscitation fluid, and reductions in VIS and pediatric logistic organ dysfunction (PELOD-2) score at 24 hours after MV and PICU discharge.

CONCLUSIONS: In our experience of pediatric patients with profound DSS and undergoing MV (2013–2021), POCUS use was associated with lower odds of death, a higher volume of resuscitation fluid, and improvements in the blood lactate levels, VIS, and PELOD-2 score.

KEY WORDS: dengue; dengue shock syndrome; mechanical ventilation; point-of-care ultrasound

Profound dengue shock syndrome (DSS) is a severe complication of dengue infection in hospitalized dengue-infected children (1). We know from modeling in a 1999–2009 cohort that profound DSS is a potentially fatal complication that occurs during the critical phase of dengue infection in patients with recurrent and decompensated DSS episodes (1). In the absence of timely and appropriate management, the in-hospital mortality rate of DSS in a 2015 cohort of adults was 23.1% (2), and in a 2015–2019 cohort of children, it was 25.6% (3).

Luan Thanh Vo, MD¹

Dat Tat Nguyen, Pharm¹

Thinh Ngoc Tran, MD¹

Hang Hoang-Thanh Tran, MD¹

Trang Thi-Hoai Doan, MD¹

Tram Ngoc Pham, MD¹

Thanh Thi-Hoai Mai, MD¹

Quynh Xuan-Thuy Nguyen, MD¹

Thuan Khac Nguyen, MD¹

Thuong Thi-Kim Nguyen, MD¹

Sakib Burza, MD^{2,3}

Thanh Tat Nguyen, MD^{1,2,4,5}

Copyright © 2023 The Author(s). Published by Wolters Kluwer Health, Inc. on behalf of the Society of Critical Care Medicine and the World Federation of Pediatric Intensive and Critical Care Societies. This is an open-access article distributed under the terms of the Creative Commons Attribution-Non Commercial-No Derivatives License 4.0 (CCBY-NC-ND), where it is permissible to download and share the work provided it is properly cited. The work cannot be changed in any way or used commercially without permission from the journal.

DOI: 10.1097/PCC.0000000000003413



RESEARCH IN CONTEXT

- Historically, mechanically ventilated children with profound dengue shock syndrome (DSS) have high case fatality rate.
- The utilization of bedside point-of-care ultrasound (POCUS) can be used to improve assessment of hemodynamics.
- Here, we report our single-center experience of using POCUS to guide fluid therapy in mechanically ventilated children with profound DSS.

In this context, in 2022, we reported two pediatric patients of profound DSS with severe plasma leakage, requiring mechanical ventilation (MV) (4). These patients underwent bedside point-of-care ultrasonography (POCUS) to assess intravascular volume and cardiac function, and to identify the presence of any pericardial-pleural effusions or ascites. We now extend these preliminary observations with a full retrospective summary of our experience of POCUS-based interventions in our 2013–2021 cohort of MV children with profound DSS. Our primary hypothesis is to test whether this practice is associated with improved 28-day in-hospital mortality. The secondary hypothesis is whether during POCUS-based intervention there was an associated change with improved hemodynamics, blood lactate concentration, vasoactive-inotrope score (VIS), and pediatric logistic organ dysfunction (PELOD-2) score.

MATERIALS AND METHODS

Our retrospective study called “Impact of point-of-care ultrasound (POCUS) utilization on outcomes in mechanically ventilated children with profound dengue shock syndrome” was approved by the Scientific Committee and institutional review board of Children Hospital No. 2, Ho Chi Minh City, Vietnam (approval number 367/QD-BVND2) on March 15, 2023. The study was conducted in accordance with Good Clinical Practice and the 1975 Declaration of Helsinki.

Study Design and Participants

Our Children’s Hospital (No. 2, Ho Chi Minh City) in Vietnam is one of the three largest tertiary referral

pediatric hospitals in southern Vietnam. We identified a retrospective cohort (January 2013 to December 2021) by using the hospital electronic database and the *International Classification of Diseases 10-CM* code numbers for severe DSS (A97.2). The inclusion criteria were: 1) admission to the PICU, 2) laboratory-confirmed dengue infection, 3) presence of profound DSS who required MV, and 4) age < 18 years. Of a total of 25,944 confirmed dengue hospitalized patients, we identified 67 who met our inclusion criteria (**Fig. S1**, <http://links.lww.com/PCC/C452>).

In this cohort, dengue infection was defined using the 2009 World Health Organization (WHO) criteria for laboratory confirmation of the diagnosis using the dengue-IgM antibody test or the nonstructural 1 antigen test (5). Profound DSS was defined as meeting the following two groups of criteria: 1) first, being treated with greater than or equal to two colloid boluses during fluid resuscitation for the first sign of compensated DSS, or having greater than or equal to two episodes of recurrent shock, or being given colloid resuscitation for decompensated DSS plus other episodes of DSS recurrence later on, and/or 2) second, fluid management with colloid combined with inotropes to sustain hemodynamic stability (1).

Patient Management

In the period 2013–2021, there was no international guidance detailing the management of children with profound DSS, even in the 2009 WHO dengue guidelines (5). However, at our center, over the 2013–2021 period, our practice in children with profound DSS was based on 2011 national dengue guidelines from the Vietnamese Ministry of Health (**Fig. S2**, <http://links.lww.com/PCC/C452>). This treatment protocol suggests using the following parameters to guide fluid administration: central venous pressure (CVP), invasive blood pressure, cardiac functions, serum albumin, and hematocrit level. Most importantly, CVP measurement is considered the cornerstone for assessing intravascular volume and guiding fluid and vasopressor use.

Placement of a central venous catheter for CVP measurement is an invasive procedure, with high risk of severe bleeding in profound DSS patients. Additionally, CVP values may be substantially altered—and therefore unreliable—during respiratory cycle-induced

changes in intrathoracic pressure caused by MV. CVP may also be altered by the presence of a pleural and pericardial effusion. Therefore, in patients with profound DSS (given that CVP measurement was either contraindicated or unreliable) our practice was to carry out POCUS to assess intravascular volume, cardiac function, and any effusions, and to guide fluid resuscitation and inotropes. Over the period 2013–2021, all POCUS studies were performed by one operator (VTL, a senior intensivist and Head of PICU in infectious diseases, and certified in advanced cardiac sonography).

The structured protocol for POCUS-based intervention included the following assessment to guide fluid resuscitation and vasopressor use: 1) state of inferior vena cava (IVC) as being either normal, collapsed, or distended, and 2) state of ventricular filling and cardiac ejection fraction (%) (**Fig. S3**, <http://links.lww.com/PCC/C452>).

Study Outcomes

Our primary outcome was 28-day in-hospital mortality. The secondary outcomes were changes in hemodynamics, blood lactate concentration, VIS, and PELOD-2 score.

Data and Measurements

Case report forms were used to record data from the medical paper-based records of the 67 patients in our cohort. Clinical and laboratory variables of interest were collected from various timepoints, including at the start of MV and when there was POCUS-guided fluid resuscitation (i.e., at 6- and 24-hr after POCUS-based fluid management, and PICU discharge).

The 28-day in-hospital mortality was calculated from hospital admission to the occurrence of patient death. Severe bleeding was defined according to the 2009 WHO dengue guidelines (5). The VIS was used to evaluate the degree of hemodynamic support (6). The PELOD-2 score was used to assess and compare the severity of organ dysfunction (7).

Statistical Analyses

Continuous variables were summarized as medians and interquartile ranges (IQRs). Categorical variables are presented as numbers (*n*) and percentages (%). Two-sided, two-sample *t* tests were used to compare

means of continuous variables. The Chi-square test and adjusted Fisher exact test were used to compare categorical variables. Logistic regression models with and without adjustments for covariables including severe bleeding, severe hepatic transaminases, blood lactate level, and VIS at starting MV were used to study the associations between POCUS-guided fluid intervention and 28-day in-hospital mortality. Point estimates are reported with 95% CIs. These adjusted covariables were chosen, based on dengue pathogenesis and our clinical knowledge. We also used the conservative Bonferroni-corrected *p* values with a significance level less than 0.01, accounting for multiplicity adjustment of pairwise comparisons of hemodynamics, fluid administration, blood lactate level, and VIS at various timepoints (i.e., at the initiation of MV and POCUS performance, and at 6- and 24-hr after MV and POCUS-guided fluid resuscitation, and at PICU discharge) (8). The remaining statistical significance was set at *p* values of less than 0.05. The R statistical software (version 4.2.2; Boston, MA) was used for all analyses.

RESULTS

In the period 2013–2021, we identified 67 PICU-admitted children with profound DSS requiring MV who met inclusion criteria. The clinical and laboratory characteristics, and outcomes of these patients at the timepoint of initiating MV, before POCUS was performed, are summarized in **Table 1**. Overall, median patient age was 7 years (IQR 4–9), and 35 of 67 (52%) were male patients. Notably, 40 of 67 patients (60%) presented with severe bleeding, and it occurred more frequently in the no-POCUS than POCUS group (21/28 [75%] vs. 19/39 [49%], mean difference 26% [95% CI, 2.3–45.3%], *p* = 0.03). There were substantial elevations in hepatic transaminases and severe coagulation disorders, with greater severity in no-POCUS than POCUS group. The median serum lactate was 4.4 (IQR, 2.0–7.3) mmol/L, and higher lactate levels were observed in the no-POCUS group (a median of 7.2 [IQR, 3.3–10.7]) than POCUS group (a median of 3.0 [IQR, 1.7–6.5]). For all studied patients, the median cardiac troponin I was 0.15 (IQR, 0.04–1.66) ng/mL, and the median VIS was 38 (IQR, 10–140). Markedly higher VIS were observed in patients who did not undergo POCUS (a median of 115 [IQR, 25–385]) than

TABLE 1.**Characteristics and Discharge Outcomes of Children With Profound Dengue Shock Syndrome at the Start of Mechanical Ventilation, Before Point-of-Care Ultrasound Was Used**

Characteristics	All Patients (n = 67)	POCUS (n = 39)	No-POCUS (n = 28)
Age, median (IQR), yr	7 (4–9)	7 (5–9)	7 (3–10)
Male, n (%)	35 (52)	22 (56)	13 (46)
Underlying diseases, n (%)	4 (6)	4 (10)	0 (0)
Severe bleeding, n (%)	40 (60)	19 (49)	21 (75)
Systolic shock index, median (IQR of beats/min/mm Hg)	1.4 (1.2–1.7)	1.5 (1.3–1.7)	1.4 (1.2–1.7)
Diastolic shock index, median (IQR of beats/min/mm Hg)	2.13 (1.71–2.73)	2.11 (1.71–2.5)	2.2 (1.88–2.92)
WBC count, median (IQR) × 10 ⁹ /L	5.78 (4.17–10.61)	5.29 (4.19–9.18)	6.78 (3.87–12.8)
Hemoglobin, median (IQR) g/dL	13.8 (11.1–15.1)	13.4 (11–15.6)	13.9 (11.7–15)
Peak hematocrit, median (IQR) (%)	45 (38–48)	45 (37–50)	46 (38–47)
Nadir hematocrit, median (IQR) (%)	35 (30–42)	38 (32–42)	33 (28–41)
Platelet cell count, median (IQR) × 10 ⁹ /L	34 (20–52)	34 (21–50)	37 (16–53)
AST, median (IQR), IU/L	991 (302–3,763)	665 (288–2,659)	1,652 (546–6,511)
ALT, median (IQR), IU/L	382 (135–1,442)	279 (97–868)	823 (242–1,734)
INR, median (IQR)	2.1 (1.7–2.8)	1.9 (1.7–2.6)	2.3 (1.9–3.0)
Serum lactate, median (IQR), mmol/L	4.4 (2.0–7.3)	3.0 (1.7–6.5)	7.2 (3.3–10.7)
Serum creatinine, median (IQR), μmol/L	51 (41–88)	47 (39–60)	70 (46–127)
Troponin I, median (IQR), ng/mL	0.15 (0.04–1.66)	0.15 (0.04–0.66)	1.43 (0.05–4.91)
Vasoactive-inotrope score, median (IQR)	38 (10–140)	20 (5–50)	115 (25–385)
Duration of vasopressor support, median (IQR), d	2 (1–5)	2 (1–3)	3 (1–6)
Length of PICU stay, median (IQR), d	7 (5–12)	8 (6–13)	6 (3–9)
Length of hospital stay, median (IQR), d	13 (7–22)	15 (11–24)	7 (3–17)
In-hospital mortality, n (%)	24 (36)	6 (15)	18 (64)

ALT = alanine aminotransferase, AST = aspartate aminotransferase, INR = international normalized ratio, IQR = interquartile range, POCUS = point-of-care ultrasound.

Summary statistics are median (IQR) for continuous variables and frequency (%) for categorical variables.

in those who intervened with POCUS (a median of 20 [IQR, 5–50]). Overall, the median length of hospital stay was 13 days (IQR, 7–22) and that of PICU stay was 7 days (IQR, 5–12). The median duration of vasopressor support was 2 days (IQR, 1–5). Noticeably, the POCUS group had longer PICU and hospital stays, and shorter days of vasopressor support than the no-POCUS group. Taken together, these data might reflect the higher mortality in the no-POCUS than POCUS groups (as presented in **Fig. S4**, <http://links.lww.com/PCC/C452>).

28-Day In-Hospital Mortality

Overall, 24 of 67 patients (36 %) in the cohort died. POCUS-based fluid management, as opposed to no-POCUS, was associated with lower proportion of mortality (6/39 [15%] vs. 18/28 [64%], mean difference of 49% [95% CI, 28–70%], $p < 0.001$). Both univariate and adjusted multivariable analyses showed that being in the POCUS group was associated with improved survival of patients, as shown in **Table 2**. The use of POCUS was associated with lower odds of mortality,

TABLE 2.**Associations Between the Point-of-Care Ultrasound, as Opposed to the No-Point-of-Care Ultrasound Designation, and Odds of Mortality**

Fatal Outcome	POCUS (n = 39)	No-POCUS (n = 28)	Crude OR ^a (95% CI)	p ^a	Adjusted OR ^b (95% CI)	p ^b
Yes, n (%)	6 (15)	18 (64)	0.10 (0.03–0.32)	< 0.001	0.17 (0.04–0.76)	0.02
No, n (%)	33 (85)	10 (36)				

OR = odds ratio, POCUS = point-of-care ultrasound.

^aCrude OR and *p* values from univariate model.

^bThe OR and *p* values from multivariable logistic analysis were adjusted for severe bleeding, severe hepatic transaminases, blood lactate level, and vasoactive-inotrope score at starting mechanical ventilation.

with an adjusted odds ratio of 0.17 (95% CI, 0.04–0.76), *p* = 0.02.

POCUS Findings at the Start of Mechanical Ventilation

Bedside POCUS findings of the cohort, presented in **Table 3** were available in 37 of 39 patients (two had missing POCUS data). Abdominal and pleural effusions were present in almost all patients undergoing POCUS. Among the studied patients, only one had reduced ejection fraction. IVC collapse and poor filling of the ventricles were present in 28 of 37 studied

TABLE 3.**Point-of-Care Ultrasound Findings at the Time of Starting Mechanical Ventilation and Intensive Care Fluid Resuscitation**

Point-of-Care Ultrasound Features	Patients (n)	Statistics
IVC collapse and poor filling of ventricles	37	28 (76)
IVC distention and adequate filling of ventricles	37	5 (13)
IVC distention and poor filling of ventricles	37	4 (11)
Preserved ejection fraction (> 50 %)	37	36 (97)
Reduced ejection fraction (< 50 %)	37	1 (3)
Pleural effusion	37	37 (100)
Abdominal ascites	37	37 (100)

IVC = inferior vena cava.

Summary statistic is frequency (%). Data were missing in two of the total 39 patients in point-of-care ultrasound cohort.

patients (76%). Nonetheless, distention of the IVC was observed in 9 of 37 children (24%). Of these nine patients with IVC distention, it was accompanied by adequate ventricular filling in five patients, and by poor ventricular filling in the other four patients.

Comparisons in Hemodynamics, Fluid Administration, Blood Lactate, VIS, and PELOD-2 Score in POCUS and No-POCUS Groups

At the initiation of MV, despite higher VIS and blood lactate in no-POCUS group, when compared with the POCUS group, we failed to identify any association with systolic shock index (**Table 4**). After 24-hr of MV, there was an associated improvement in the VIS in the POCUS group, but not in the no-POCUS group (POCUS: mean difference 33 [95% CI, 15–52, *p* < 0.001]; vs. no-POCUS: mean difference 148 [95% CI, 26–270, *p* = 0.02]), (as presented in **Figs. 1, A and B**). Additionally, at the start of MV and 24 hours later, there was an association between POCUS grouping and blood lactate level; and at both timepoints no-POCUS group had higher lactate levels. On paired data analyses between the start of MV and 24 hours later, we failed to find an associated change in lactate level in either group (POCUS: mean difference –0.2 mmol/L [95% CI, –1.8 to 1.4, *p* = 0.83]; and no-POCUS: mean difference –1.6 mmol/L [95% CI, –4.9 to 1.8, *p* = 0.34]). The dynamic variations of blood lactate within 24 hours post-MV were analyzed and presented in SDC **Figure S6** and **Table S1** (<http://links.lww.com/PCC/C452>). Markedly, the no-POCUS cohort had persistently elevated blood lactate levels and impaired clearance function, while the POCUS group experienced constantly lower blood lactate concentrations and better clearance capacity.

TABLE 4.
Comparisons in Hemodynamics, Fluid Administration, and Vasoactive-Inotrope Score

Parameters	POCUS (n = 39)	No-POCUS (n = 28)	p ^a
Systolic shock index			
Shock index at timing of MV (beats/min/mm Hg)	1.5 (1.33–1.65)	1.41 (1.15–1.66)	0.67
Shock index at 24 hr after MV and fluid resuscitation (beats/min/mm Hg)	0.95 (0.76–1.12)	0.73 (0.59–0.86)	< 0.001
Pocus-based fluid amounts given to patients			
Total fluid is given during first 06 hr on starting MV (mL/kg)	53 (36–70)	43 (35–59)	0.21
Total fluid is given within 24 hr after starting MV (mL/kg)	185 (71–227)	85 (55–142)	< 0.01
Vasoactive-inotrope score			
VIS at the initiation of MV	20 (5–50)	115 (25–385)	< 0.01
VIS at 6 hr after MV and fluid resuscitation	10 (0–30)	26 (20–55)	< 0.01
VIS at 24 hr after MV and fluid resuscitation	5 (0–20)	60 (0–200)	< 0.01
VIS at PICU discharge or death	0 (0–0)	140 (0–345)	0.02
Blood lactate concentration			
Lactate level at the initiation of MV (mmol/L)	3.0 (1.7–6.5)	7.2 (3.3–10.7)	< 0.01
Lactate level at 24 hr after MV and fluid resuscitation (mmol/L)	2.9 (1.4–5.7)	8 (3.6–14)	< 0.01
PELOD-2 score			
PELOD-2 at the timing of starting MV	8 (6–9)	10 (8–17)	< 0.001
PELOD-2 at 24 hr after fluid resuscitation and MV	7 (6–9)	13 (7–19)	< 0.001
PELOD-2 at discharge or death	2 (0–4)	11 (1–23)	< 0.001

MV = mechanical ventilation, OR = odds ratio, PELOD-2 = pediatric logistic organ dysfunction score, POCUS = point-of-care ultrasound, VIS = vasoactive-inotrope score.

^ap values withdrawn from two-sample *t* test and complete-case analysis.

Summary statistics are median (interquartile range) for continuous variables and frequency (%) for categorical variables. The Bonferroni-corrected *p* values were all set at the significance level of less than 0.01 for multiple pairwise comparisons.

Regarding fluid resuscitation, we failed to identify the use of POCUS and an associated difference in fluid administration within 6 hours since starting MV. However, by 24 hours, there was an associated greater volume of fluid resuscitation in the POCUS group, as opposed to the no-POCUS group (185 [IQR 71–227] vs. 85 [IQR 55–142] mL/kg, *p* < 0.01) (Table 4). Lastly, there were significant differences in PELOD-2 score between POCUS and no-POCUS groups at various timepoints: at MV, 24 hours post-MV, and at PICU discharge (Table 4). Particularly, POCUS cohort showed marked improvement in PELOD-2 score at PICU discharge compared with the baseline (mean difference 3.7 [95% CI, 1.1–6.3], *p* < 0.01) (Fig. 1C), in contrast to poorer conditions in the no-POCUS cohort (mean difference –2.6 [95% CI, –7.4 to 2.3], *p* = 0.28) (Fig. 1D).

DISCUSSION

Profound DSS is observed in the late stage of critical dengue-infected patients with multiple episodes of recurrent hypotensive shock (2). Our study shows that in our 2013–2021 experience, such children requiring MV had a high in-hospital mortality of 36% (95% CI, 25–49%). These data are consistent with other adult and pediatric cohorts (2, 3). In this context, over 9 years we have used POCUS in caring for 39 pediatric patients with profound DSS, accounting for 58% of all patients with DSS that we encountered in our PICU. Using POCUS (rather than not) in DSS patients is associated with greater volumes of fluid resuscitation administered in the first 24 hours after initiation of MV, and there was also a fall in vasopressor use in this same period. In



AT THE BEDSIDE

- In our experience of managing critically ill children with profound DSS requiring mechanical ventilation, POCUS-guided fluid resuscitation, rather than not was associated with lower odds of death.
- During PICU care, use of POCUS at the time of fluid resuscitation was associated with improvements in hemodynamics, blood lactate levels, and vasoactive-inotrope score.
- The utility of POCUS to individualize fluid resuscitation in mechanically ventilated patients with profound DSS warrants prospective evaluation.

retrospect, being selected for use of POCUS during profound DSS management was associated with lower odds of mortality, at least a 10% reduction.

Institutional POCUS training focusing on PICU patients was reported as early as 2015 (9), and the clinical applicability of POCUS has been increasingly shown to improve pediatric critical care (10). In parallel with the evolution of POCUS, we used POCUS in 39 children with profound DSS during pediatric intensive care at our tertiary hospital since 2017. The distribution of patients with profound DSS managed with POCUS, is shown in **Figure S5** (<http://links.lww.com/PCC/C452>). A recent report of a Malawian pediatric cohort showed a high prevalence of left ventricular systolic dysfunction among hospitalized children with severe febrile illness and elevated serum lactate levels, which were detected by cardiac POCUS (11). However, there was no statistically significant association between heart dysfunction and in-hospital mortality, likely because of limited study power. Consequently, both the Malawian cohort and our study highlighted the practical need for POCUS applicability in emergency and pediatric intensive care. POCUS offers many modalities across a spectrum of disciplines, demanding proficient performers and standardized training programs to ensure accuracy and patient safety (12).

Significantly, two main targets for fluid resuscitation in profound DSS cohort are compensation for ongoing fluid leakage and appropriate decompression of the distended abdominal cavity. Effusions and elevated intra-abdominal pressure may reduce the accuracy of

many modalities of fluid response assessments in children (13, 14). In patients with intra-abdominal hypertension, dynamic heart-lung interaction indices such as pulse pressure variation and stroke volume variation remain valid in the absence of low-tidal volume, cardiac arrhythmias, and spontaneous breathing activity (15). However, these methods are limited by indeterminate cutoff points and the common practice of low-tidal volume to prevent ventilator-associated lung injuries in pediatric patients. Likewise, the reliability of the passive leg-raising test diminishes in the presence of high intra-abdominal pressure (13, 16). The central principle in managing patients with severe DSS is to ensure sufficient blood perfusion to vital organs with minimal fluid administration (5). Patients with severe DSS may present with highly increased intra-abdominal pressure, and a collapsed IVC may signify precardiac obstruction due to pressure (4, 17, 18). Our study showed that approximately three-quarters of patients had IVC collapse and poor filling of ventricles, while 11% of children had IVC distention and poor filling of ventricles. This indicated that dengue obstructive shock syndrome occurred early in the abdominal cavity, and a late stage was observed in the cardiac chambers (4). Poor filling of ventricles with preserved ejection fraction was notably present in most patients, which could be a result of combined causes, including: 1) obstruction of the IVC due to drastically increased pressures in the intra-abdominal, pleural, and pericardial cavities, 2) severe plasma leakage, and 3) reduced afterload due to systemic vasodilation. Consequently, our patients experienced prolonged dengue shock and multiple organ failures due to reduced hemoperfusion (ischemia). Notably, the POCUS patient cohort received greater volumes of fluid resuscitation in the first 24 hours after MV initiation and fewer vasopressors (lower VIS) than the comparable no-POCUS group. Hence, interventions with less fluid and higher vasopressor administration could possibly lead to poorer survival outcomes among patients without POCUS. In the presence of dengue obstructive shock syndrome, particularly in patients on MV, fluid demand rather than vasopressors is needed. That is to state more inotropy and/or less fluid administration can aggravate prolonged dengue shock. Simultaneously, abdominal decompression is critical for recovering the blood return to the heart. Notably, the end-diastolic volumes of both ventricles are decreased when the intrathoracic

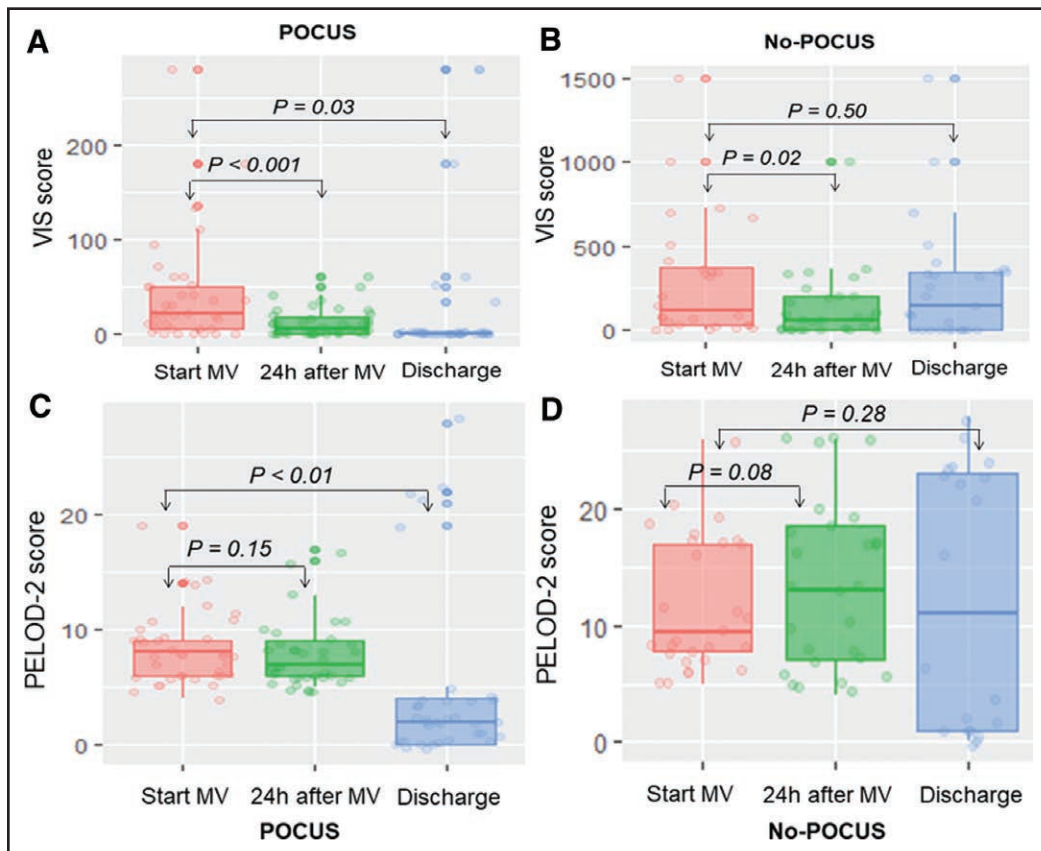


Figure 1. Serial-paired *t* tests in vasoactive-inotropic score (VIS) and pediatric logistic organ dysfunction (PELOD-2) score at various timepoints: at the initiation of mechanical ventilation (MV), 24 hours after MV plus fluid resuscitation, and at PICU discharge. In particular, the point-of-care ultrasound (POCUS) cohort showed significant improvements in VIS (**A**) and PELOD-2 (**C**) scores at 24 hours post-MV and at PICU discharge compared with baseline levels (at MV initiation). In contrast, the comparable no-POCUS group experienced deterioration in both the VIS (**B**) and PELOD-2 (**D**) scores at PICU discharge compared with baseline levels.

pressure increases (19, 20). Hence, interventions to reduce intrathoracic pressure significantly improve ventricular volume, ejection fraction, and cardiac output (21). Therefore, we propose a sensible approach that includes 1) continued fluid administration to ensure preload adequacy, 2) early abdominal paracentesis for decompression in the presence of dengue obstructive shock syndrome, and 3) vasoconstrictors for systemic vasodilation due to multiple organ failure.

Additionally, in this study, we acknowledged that non-POCUS patients presented with more severe disease (higher blood lactate score and VIS and more liver injury) at baseline (MV) than the POCUS group. However, the 24-hour progression post-MV in both groups raises several important points. First, whether fluid demand or vasopressors are more significant in patients with profound DSS. The aforementioned

pathophysiology shows that higher inotropy can potentially harm patients with prolonged DSS, and fluid administration is more essential than vasopressors. Second, whether ischemia or impaired clearance explains the deterioration in patients without POCUS. Our study data showed that both PELOD-2 score and clearance were persistently poorer in the no-POCUS group than in the POCUS group during PICU stay. The 24-hour dynamic changes in PELOD-2 and lactate clearance suggest that ischemia is more predominant than impaired clearance. In profound DSS patients, decreased effective arterial blood volume was a critical factor, and a greater volume of resuscitated fluid can

improve hemoperfusion to vital organs, increasing patient's survival outcome.

Our study has several limitations inherent to the nature of a single-center, retrospective cohort design with small sample size and unstandardized collections of clinical and laboratory data during hospitalization. Most significantly, differences in manifestations between the POCUS and no-POCUS patients at the outset necessitate prudent interpretation of our results.

Further investigation in prospective cohorts with an appropriate study design and well-defined interventions is essential to elucidate this knowledge gap. A standardized POCUS protocol for patients with profound DSS is necessary for practicality in the PICU. Our study results pave the way for the utility of POCUS in individualizing fluid resuscitation in mechanically ventilated patients with profound DSS.

CONCLUSIONS

Mechanically ventilated children with profound DSS who underwent POCUS-based fluid interventions had better survival outcomes. POCUS use was associated with a higher volume of resuscitation fluid and improvements in the blood lactate levels, VIS, and PELOD-2 score.

ACKNOWLEDGMENTS

We have special thanks to Drs. Stefan Weber and Erin Stratta for their critical peer-review points for this article. We thank the administration and study staff (Drs. Tien, Oanh, Bao, Mr. Anh, and Mrs. Thuy) at the Children Hospital 2 for their assistance in medical data retrieval. We also thank Drs. Thien and Nhu for their contributions to the English review.

- 1 Department of Infectious Diseases, Children Hospital No. 2, Ho Chi Minh City, Vietnam.
- 2 London School of Hygiene and Tropical Medicine, London, United Kingdom.
- 3 Health in Harmony, London, United Kingdom.
- 4 Texila American University, Georgetown, Guyana.
- 5 Woolcock Institute of Medical Research, Hanoi, Vietnam.

Supplemental digital content is available for this article. Direct URL citations appear in the printed text and are provided in the HTML and PDF versions of this article on the journal's website (<http://journals.lww.com/pccmjournal>).

Drs. Luan, Thanh, and Sakib conceptualized and designed the study. Drs. Luan, Dat, Thinh, Trang, Hang, Tram, Thanh, Quynh, Thuong, and Thuan were involved in clinical data collection. Drs. Thanh and Luan were involved in formal data analysis. Drs. Luan, Sakib, and Thanh were involved in writing the original article. Drs. Luan, Sakib, and Thanh critically reviewed the article. All authors read and approved the final article.

Drs. T.T. Nguyen, T.L. Vo, Nguyen, D.T. Tran, Doan, Pham, Mai, Q.X.T. Nguyen, T.K. Nguyen, and T.T.K. Nguyen disclosed the study was funded by Kim Oanh Foundation. The remaining authors have disclosed that they do not have any potential conflicts of interest.

For information regarding this article, E-mail: thanhonor@gmail.com

REFERENCES

1. Lam PK, Tam DT, Dung NM, et al: A prognostic model for development of profound shock among children presenting with dengue shock syndrome. *PLoS One* 2015; 10:e0126134
2. Chen CM, Chan KS, Yu WL, et al: The outcomes of patients with severe dengue admitted to intensive care units. *Medicine (Baltim)* 2016; 95:e4376
3. Sachdev A, Pathak D, Gupta N, et al: Early predictors of mortality in children with severe dengue fever: A prospective study. *Pediatr Infect Dis J* 2021; 40:797–801
4. Nguyen TT, Le NT, Nguyen NM, et al: Clinical features and management of children with dengue-associated obstructive shock syndrome: A case report. *Medicine (Baltimore)* 2022; 101:e31322
5. Dengue: *Guidelines for Diagnosis, Treatment, Prevention and Control: New Edition*. Geneva, World Health Organization, 2009
6. McIntosh AM, Tong S, Deakynne SJ, et al: Validation of the vasoactive-inotropic score in pediatric sepsis. *Pediatr Crit Care Med* 2017; 18:750–757
7. Leteurte S, Duhamel A, Salleron J, et al; Groupe Francophone de Réanimation et d'Urgences Pédiatriques (GFRUP): PELOD-2: An update of the PEdiatric logistic organ dysfunction score. *Crit Care Med* 2013; 41:1761–1773
8. Armstrong RA: When to use the Bonferroni correction. *Ophthalmic Physiol Opt* 2014; 34:502–508
9. Conlon TW, Himebauch AS, Fitzgerald JC, et al: Implementation of a pediatric critical care focused bedside ultrasound training program in a large academic PICU. *Pediatr Crit Care Med* 2015; 16:219–226
10. Conlon TW, Kantor DB, Su ER, et al: Diagnostic bedside ultrasound program development in pediatric critical care medicine: Results of a national survey. *Pediatr Crit Care Med* 2018; 19:e561–e568
11. Bensman RS, Berrens Z, Mkaliinga T, et al: Prevalence of cardiac dysfunction in Malawian children with severe febrile illness. *Pediatr Crit Care Med* 2022; 23:493–501
12. Maxson IN, Su E, Brown KA, et al; Pediatric Research Collaborative on Critical Ultrasound (PeRCCUS), a subgroup of the Pediatric Acute Lung Injury and Sepsis Investigators (PALISI) Network: A program of assessment model for point-of-care ultrasound training for pediatric critical care providers: A comprehensive approach to enhance competency-based point-of-care ultrasound training. *Pediatr Crit Care Med* 2023; 24:e511–e519
13. Beurton A, Monnet X, Teboul JL: Assessment of fluid responsiveness in patients with intraabdominal hypertension. In: *Annual Update in Intensive Care and Emergency Medicine*. Vincent JL (Ed). Cham, Springer, 2018
14. Monnet X, Shi R, Teboul JL: Prediction of fluid responsiveness. What's new? *Ann Intensive Care* 2022; 12:46
15. Lee JH, Kim EH, Jang YE, et al: Fluid responsiveness in the pediatric population. *Korean J Anesthesiol* 2019; 72:429–440
16. Goldsmith AJ, Shokoohi H, Loesche M, et al: Point-of-care ultrasound in morbidity and mortality cases in emergency medicine: Who benefits the most? *West J Emerg Med* 2020; 21:172–178
17. Cheatham ML: Abdominal compartment syndrome: Pathophysiology and definitions. *Scand J Trauma Resusc Emerg Med* 2009; 17:10
18. Gottlieb M, Davenport DV, Adams S, et al: Current approach to the evaluation and management of abdominal compartment syndrome in pediatric patients. *Pediatr Emerg Care* 2019; 35:874–878
19. Vaska K, Wann LS, Sagar K, et al: Pleural effusion as a cause of right ventricular diastolic collapse. *Circulation* 1992; 86:609–617
20. Verhoeff K, Mitchell JR: Cardiopulmonary physiology: Why the heart and lungs are inextricably linked. *Adv Physiol Educ* 2017; 41:348–353
21. Wang Z, Cai QZ, Ban CJ, et al: Improved heart hemodynamics after draining large-volume pleural effusion: A prospective cohort study. *BMC Pulm Med* 2018; 18:62

SUPPLEMENTARY DATA

Additional details of study participants and treatment protocols for children with profound dengue shock syndrome

Table of contents

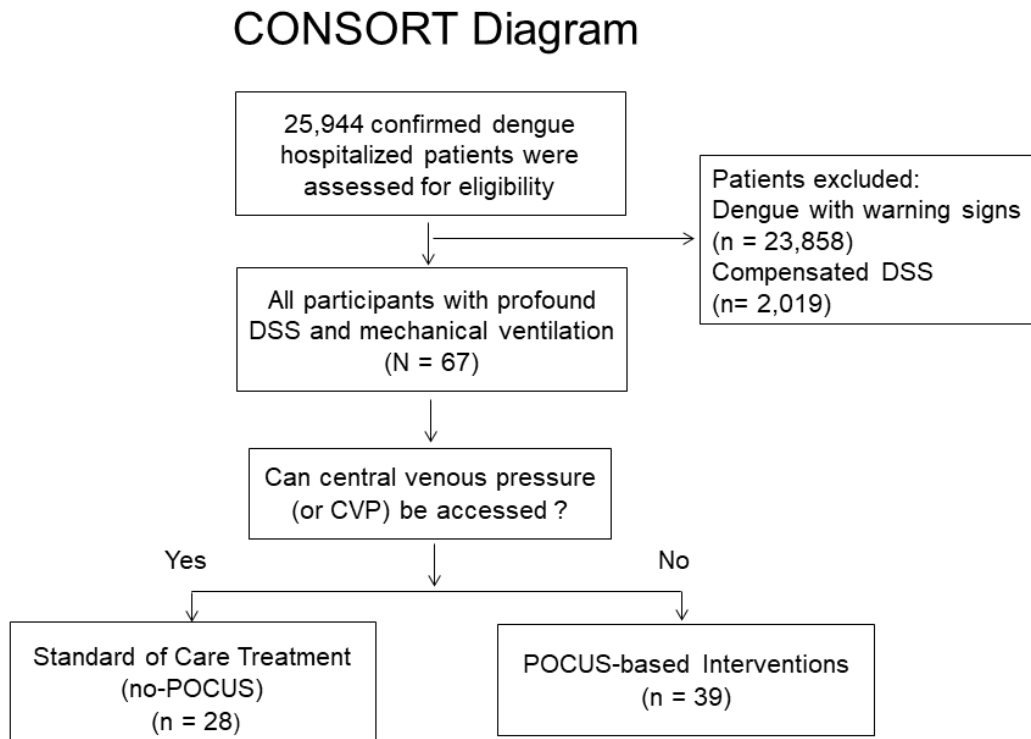
Title	Page
1. The CONSORT diagram of study participants (Figure S1)	1,2
2. Standard of care (SOC) and POCUS-based treatment algorithms for hospitalized children with profound dengue shock syndrome (DSS)	2
2.1 SOC treatment for patients with profound DSS (Figure S2)	2-4
2.2 POCUS-based intervention protocol for patients with profound DSS (Figure S3)	4-7
3. Kaplan-Meier curves and log-rank test for profound DSS in POCUS and no-POCUS groups (Figure S4)	7
4. Distribution of POCUS cases over the study period 2013-2021 (Figure S5)	8
5. Comparisons of serum lactate clearance in POCUS and no-POCUS groups (Figure S6 and Table S1)	8-10
6. References	10

1. The CONSORT diagram of study participants

Over the study period from January 2013 to December 2021, based on the hospital electronic database and ICD-10-CM code numbers for severe dengue shock syndrome, we screened all 25,944 hospitalized children with laboratory-confirmed dengue infection. The study eligibility criteria were age < 18 years, laboratory-confirmed dengue infection, mechanical ventilation, and profound DSS. Consequently, we excluded 23,858 dengue-infected inpatients with warning signs and 2,019 patients with compensated DSS. Ultimately, 67 children with profound DSS requiring mechanical ventilation were identified to meet the eligibility criteria

and were included in our analysis, as shown in the CONSORT diagram (**Figure S1**). Among these patients, 28 received standard of care treatment and the other 39 patients with profound DSS underwent POCUS-based interventions.

Figure S1. The CONSORT diagram of study participants identified and recruited in analysis



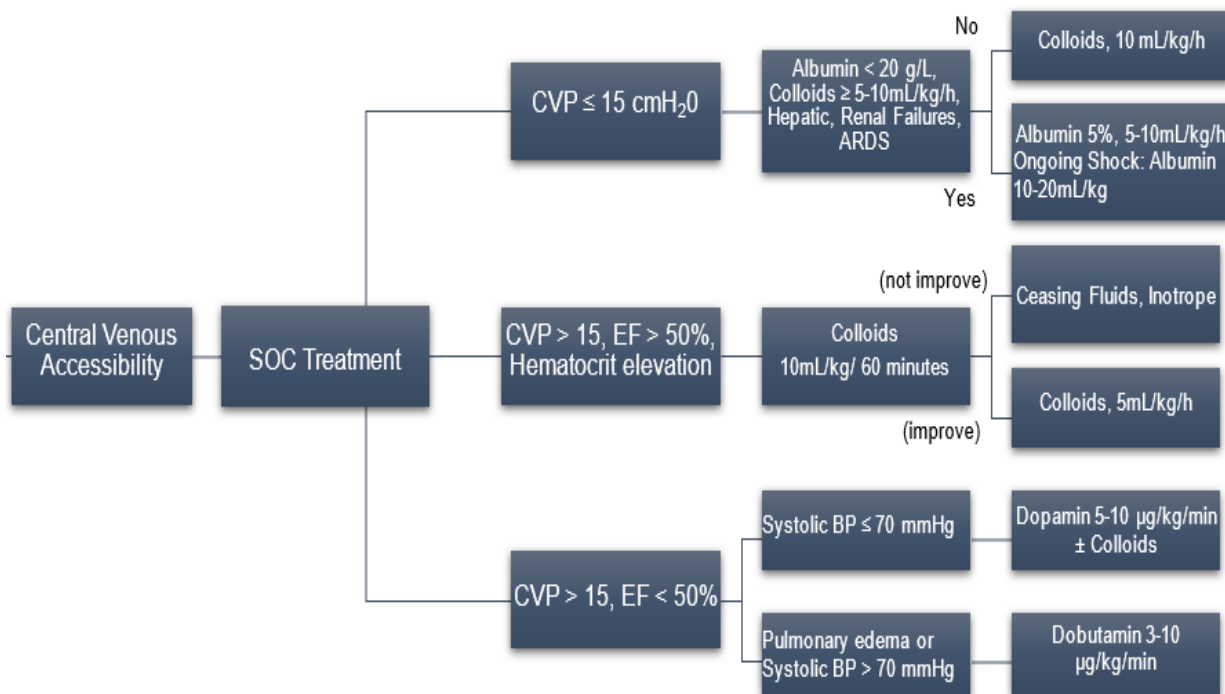
2. Standard of Care (SOC) and POCUS-based Treatment Algorithms for Hospitalized Children with Profound Dengue Shock Syndrome (DSS)

To date, there has been no detailed description of managing children with profound DSS according to the 2009 WHO dengue guidelines (1). Thus, at our pediatric hospital, the standard of care for children with profound DSS has been practiced in accordance with the national dengue guidelines from the Vietnamese Ministry of Health (MoH), which was developed primarily based on therapeutic principles from the 2009 WHO dengue guidelines (1, 2).

2.1 SOC Treatment for Patients with Profound DSS

The Vietnamese MoH guidelines include key parameters, including central venous pressure (CVP), invasive blood pressure monitoring, cardiac functions, serum albumin and hematocrit have been used to monitor and manage patients with severe DSS (2). Central venous access for CVP measurement is the cornerstone for assessing intravascular volume inadequacy, guiding fluid resuscitation (doses of colloidal fluids and albumin), and use of vasopressors, as shown in **Figure S2** (2).

Figure S2. Standard of care treatment for children with severe decompensated dengue shock syndrome



ARDS= Acute respiratory distress syndrome; BP = Blood pressure; CVP = central venous pressure;

EF = Cardiac ejection fraction (%); Hct = Hematocrit

Based on CVP levels, cardiac ejection fraction (EF %), hematocrit, systolic blood pressure, and the presence of pulmonary edema, these parameters determine the doses of colloid fluid

administered (ranging from 5 to 20 mL/kg/h), administration of albumin, use of vasopressors and inotropes, and the decision to cease fluids and vasopressors (2). In our study, the no-POCUS patient cohort received SOC treatment in accordance with the national dengue guidelines (2).

2.2 POCUS-based Intervention Protocols for Patients with Profound DSS

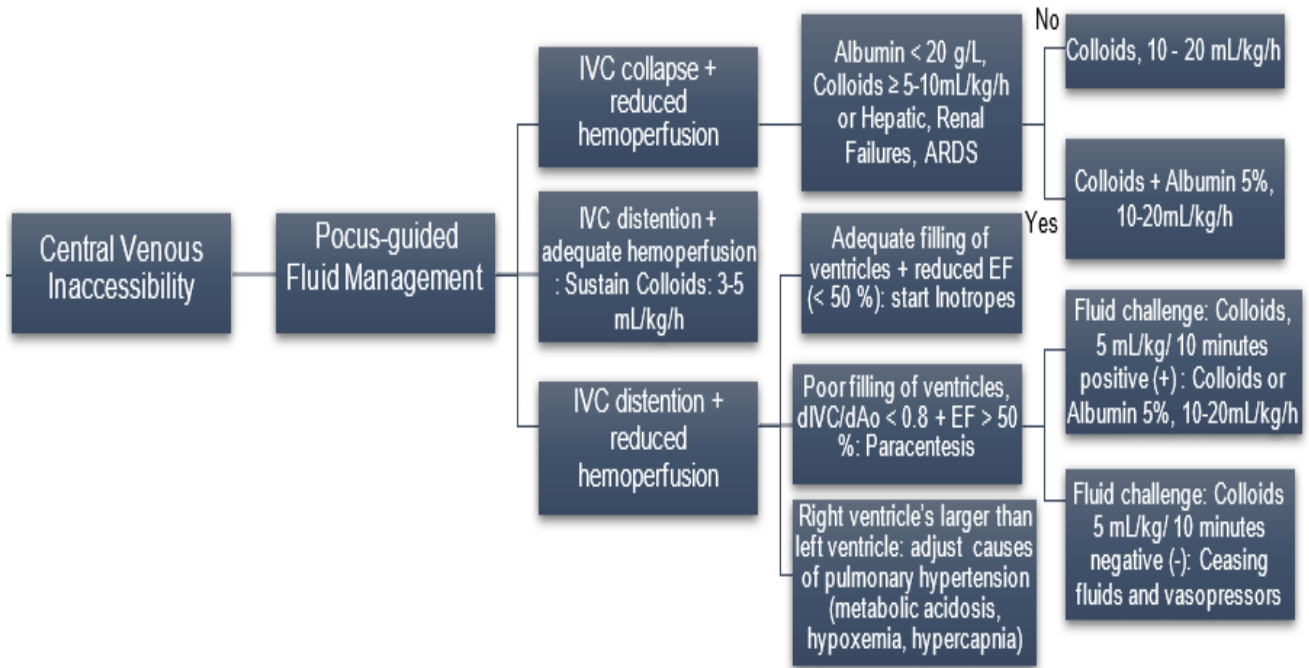
In clinical practice, placement of a central venous catheter for CVP measurement is an invasive procedure with a high risk of severe bleeding in patients with profound DSS. Additionally, CVP values may be substantially altered, and therefore unreliable during the respiratory cycle, inducing changes in intrathoracic pressure caused by MV. CVP may also be altered by the presence of a pleural and pericardial effusion (3). On this account, among profound DSS patients on mechanical ventilation, for whom the CVP was either contra-indicated or could not be performed, we tentatively performed POCUS to assess hemodynamics, to guide fluid resuscitation and inotropes, and monitor responses.

Throughout the period 2013-2021, all POCUS studies were performed by one operator (VTL, a senior intensivist, Head of PICU in Infectious Diseases, and certified in advanced cardiac sonography). The structured protocol for POCUS-based intervention included the following assessment to guide fluid resuscitation and vasopressor use: i) state of inferior vena cava (IVC) as being either normal, collapsed, or distended; and ii) state of ventricular filling and cardiac ejection fraction (%) (see SDC **Figure S3**).

First, if the patient's inferior vena cava (IVC) collapsed, accompanied by signs of poor perfusion, fluid resuscitation was administered until signs of slightly distended IVC and adequate blood perfusion to the vital organs were observed, hence fluid administration was tapered. Second, in the presence of slight distention of the IVC, but with minimal improvement in blood perfusion

to vital organs, we further evaluated cardiac function. Inotropes were used if cardiac ejection fraction (EF %) was reduced $< 50\%$. Given the condition that, if the patient's heart was hyperdynamic and cardiac function was well-preserved, accompanied by poor filling of ventricles at the end-diastolic phase and a low diameter ratio between the IVC and juxtaposed descending aorta ($dIVC/dAo$) < 0.8 , we continued to administer intravenous fluid infusion until adequate hemoperfusion was achieved. We also performed abdominal paracentesis for decompression to improve visceral hemoperfusion. The threshold for performing abdominal paracentesis in profound DSS patients with "abdominal compartment syndrome" (or ACS), when intra-abdominal pressure is ≥ 27 cm H₂O (equivalent to 20 mmHg), plus either progressive organ failures or newly developed organ failure(s). Lung sonography was performed in parallel with fluid resuscitation. In the presence of an increase ≥ 3 B-lines in a longitudinal plane between 2 intercostal spaces bilaterally, compared to the baseline (at starting MV initiation and POCUS-based fluid administration), fluid resuscitation was temporarily withheld and subsequently re-evaluated.

Figure S3. POCUS-based interventions for children with profound DSS



ARDS= Acute respiratory distress syndrome; EF = Cardiac ejection fraction (%); IVC = Inferior vena cava; dIVC/dAo = Diameter ratio between IVC and juxtaposed descending aorta

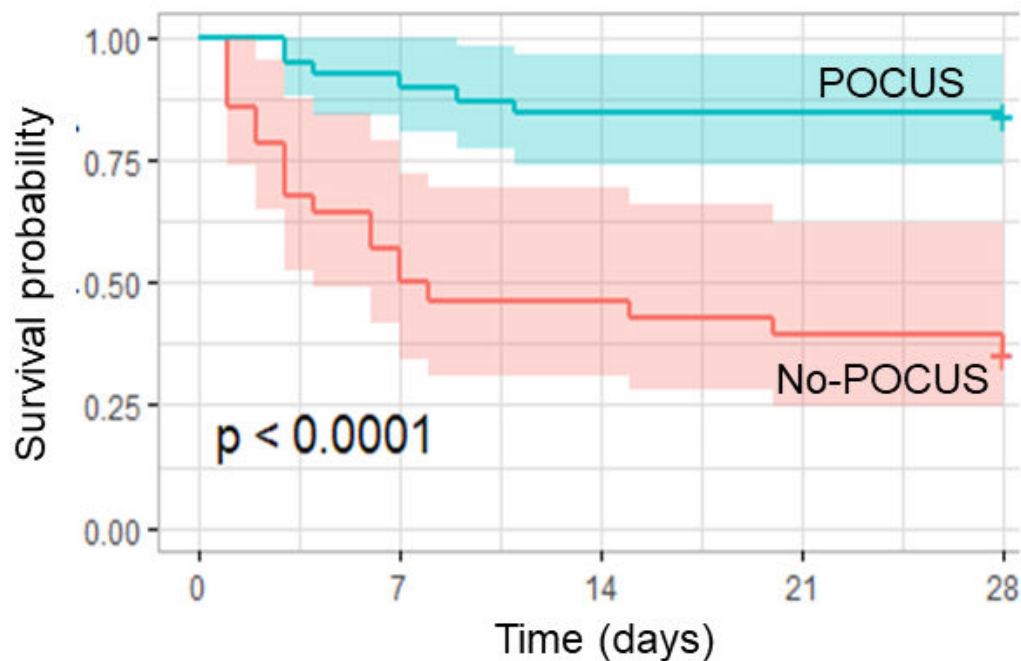
These are definitions in POCUS-based intervention protocol:

- a. *Reduced hemoperfusion* was defined as increased blood lactate levels, metabolic acidosis and capillary refill time (or CRT) ≥ 3 seconds, and urine output ≤ 0.5 mL/kg/h.
- b. *Adequate hemoperfusion* was defined as blood lactate levels either in normal reference range or 20% reduction within 2 hours of fluid resuscitation, CRT < 3 seconds, and urine output > 0.5 mL/kg/h.
- c. *Poor filling of ventricles* was defined when the end-diastolic volumes of both ventricles were small, and/or there was presence of “Kissing sign” at the end of systolic cycle (4).

- d. *Adequate filling of ventricles* was defined as when the end-diastolic volumes of both ventricles were in normal reference range adjusted by patient's age, with normal atrioventricular (AV) valve opening amplitude.
- e. *Fluid challenge test was positive (+)* when there were elevated arterial pressure and decreased pulse rate, amelioration of CRT, and undiminished tidal volume.
- f. *Fluid challenge test was negative (-)* when there were presence of ≥ 3 B-lines in a longitudinal plane between 2 intercostal space bilaterally, and unimproved blood perfusion (5, 6).

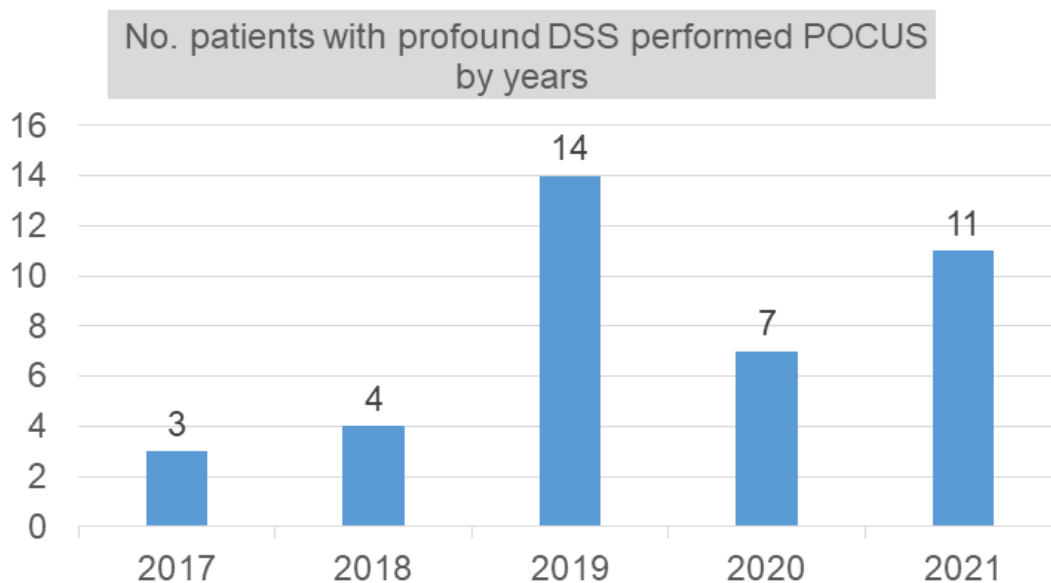
3. Kaplan-Meier Curves and Log-rank Test for Profound DSS in POCUS and no-POCUS Groups

Figure S4. represents the Kaplan-Meier curves and P value from the log-rank test. There was a substantial improvement in the survival probability of PICU-admitted ventilated children with profound DSS managed with POCUS-based fluid resuscitation compared with the no-POCUS group.



4. Distribution of POCUS cases over the study period 2013-2021

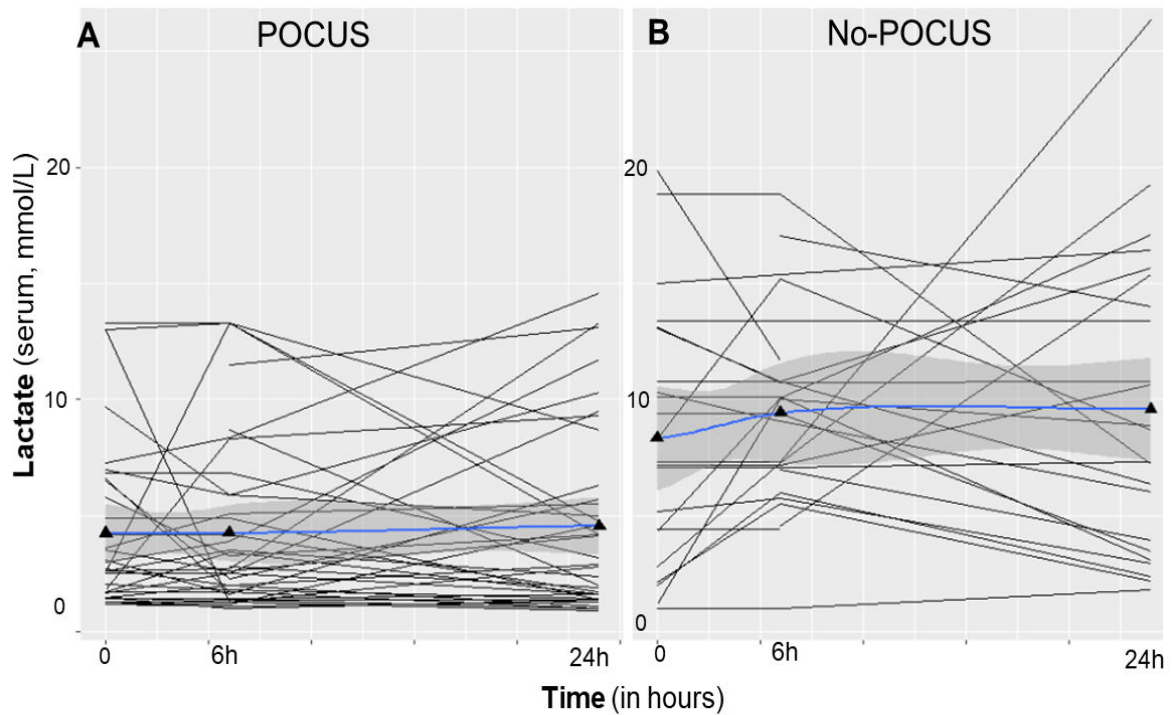
Figure S5. shows the number of patients with profound DSS who underwent POCUS for fluid resuscitation at our hospital. Notably, we started performing POCUS for severe DSS patients to guide intensive fluid resuscitation from 2017 onwards, in cases where CVP was either contraindicated or not feasible, particularly in severe dengue patients on mechanical ventilation and with a high risk of severe bleeding.



5. Comparisons of serum lactate clearance in POCUS and no-POCUS groups

Serum lactate concentrations were measured at MV initiation (baseline) at 6h, and 24h after starting MV. Absolute changes in serum lactate over 24 hours were calculated by regressing lactate levels (mmol/L) against time (in hours) for each individual patient using linear mixed effect modelling. The regression slopes represent the projected changes over a 24h period and the clearance rate of serum lactate among patients with profound DSS in this study.

Figure S6. illustrates the dynamic changes in serum lactate levels in two groups: POCUS and no-POCUS within 24h after the initiation of mechanical ventilation and fluid resuscitation.



As presented in **Table S1**, there was a statistical difference in the clearance (slope) of serum lactate in the two groups, with poorer clearance (higher slope levels) in the no-POCUS group than the POCUS cohort.

Table S1. Comparisons in Dynamic Changes in Serum Lactate within 24h After Initiating Mechanical Ventilation and Fluid Resuscitation between POCUS and No-POCUS groups

Groups	Slope, median (IQR)	Slope, min - max	Slope, mean (\pm SD)	<i>P</i> -value ^a
POCUS	0.712 (0.707 - 0.720)	0.658 - 0.77	0.716 (0.021)	< 0.01
No-POCUS	0.724 (0.717 - 0.752)	0.707 - 0.794	0.735 (0.025)	

Notes. Summary statistics are median (interquartile range, IQR), mean (standard deviation, SD), and min (minimum) to max (maximum). Data of 24h dynamic serum lactate changes were retrieved in 38/39 patients in the POCUS group (one patient had missing data).

^a *P*-value was withdrawn from the two independent t-test for lactate clearance rates (slopes) between the POCUS and no-POCUS groups.

References

1. Dengue: Guidelines for Diagnosis, Treatment, Prevention and Control: New Edition. *Geneva: World Health Organization* 2009.
2. The Vietnamese Ministry of Health 2011 dengue guidelines. Available from: <https://thuvienphapluat.vn/van-ban/The-thao-Y-te/Quy-et-dinh-458-QD-BYT-huong-dan-chan-doan-dieu-tri-sot-xuat-huyet-Dengue-120583.aspx>. (Accessed and cited on 30 July 2023).
3. De Backer D, Vincent JL: Should we measure the central venous pressure to guide fluid management? Ten answers to 10 questions. *Crit Care*. 2018; 22(1):43.
4. Tung Chen Y, Blancas Gómez-Casero R, Quintana Díaz M, et al: Inspiratory collapse of the inferior vena cava and the kissing ventricle sign: markers of poor prognosis in emergency gastrointestinal bleeding. *Emergencias*. 2019; 31:79-85. English, Spanish.
5. Lichtenstein DA, Mezière GA: Relevance of lung ultrasound in the diagnosis of acute respiratory failure: the BLUE protocol. *Chest*. 2008;134: 117-25. Erratum in: *Chest*. 2013; 144:721.
6. Volpicelli G, Elbarbary M, Blaivas M, et al: International evidence-based recommendations for point-of-care lung ultrasound. *Intensive Care Med*. 2012; 38:577-91.